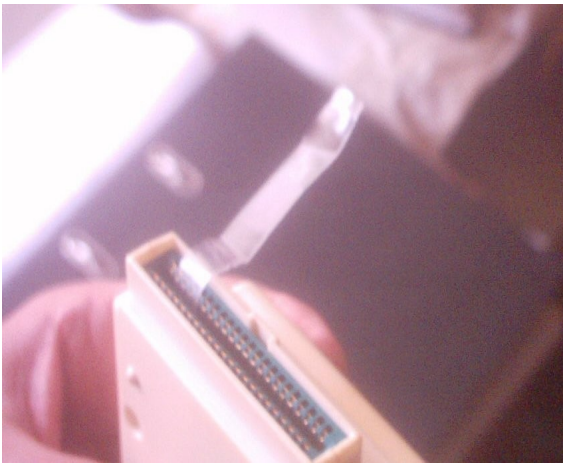


How to stop a cartridge running and get a hex dump :



1. place a stripe of PET from coke or anything else as you can see on the pic...
2. put it together with the cartridge into the memory expansion port
3. switch on the VZ/LASER (cartridge will not start)
4. pull out the stripe
5. start a monitor programm from tape to get the hex-dump

thats all, don't worry, I've tested it on my own VZ 200 !

Cheers,  
Gernot